

BRIEF REPORT OF National Webinar

On

“Socio Economic Scenario in the current Pandemic of Covid-19 in India”

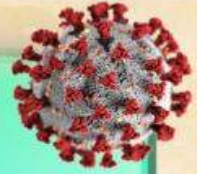
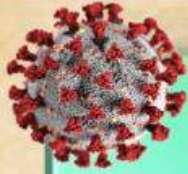
5th August 2020



***Organized by
IQAC, Jawaharlal College, Patnagarh***



JAWAHARLAL COLLEGE, PATNAGARH



Webinar on **SOCIO-ECONOMIC SCENARIO IN THE CURRENT PANDEMIC OF COVID-19 IN INDIA**

Date: 5th August 2020 / Time: 11.15 a.m.

Registration link: <https://forms.gle/o26MLRNPQbYDInrS9>

Inauguration by

Prof. Atanu Kumar Pati

Vice-Chancellor, GM University, Sambalpur

Resource Persons



Prof. Atanu Kumar Pati
Vice-Chancellor
GM University, Sambalpur

Topic:

**Clock and Health in Human
during the Covid-19 pandemic**
Time: 11.30 a.m. to 12.15 p.m.



Prof. Amiya Kumar Rath
Advisor, NAAC
Bengaluru

Topic:

**Higher education in this
current scenario of Covid-19**
Time: 12.20 p.m. to 1.00 p.m.



Prof. Uma Charan Pati
Deputy Registrar
GM University, Sambalpur

Topic:

**The Psycho-economic dimensions
of the Covid-19 pandemic**
Time: 1.05 p.m. to 1.45 p.m.



Mrs. Arati Panda
Coordinator IQAC
Jawaharlal College, Patnagarh



Dr. Devraj Mishra
Convener, Principal
Jawaharlal College, Patnagarh

Contact Details: jc.iqac@gmail.com // Cell. 9437706399, 8280818246, 8984244663, 9438315952

Detailed Report:

A national webinar on the topic “**Socio-economic scenario in the current pandemic of COVID 19 in India**” was organized the Internal Quality Assurance Cell (IQAC) Jawaharlal College, Patnagarh in collaboration with IQAC of the institution on **05 August 2020** at **11.15am** through Google Meet. Students and staff from different institutions of the country participated in the webinar. A total of 57 participants had joined the webinar. At 11.15 am Dr. Devraj Mishra, head of the institution delivered the welcome address and requested the chief guest to inaugurate the webinar. **Prof. Atanu Kumar Pati, Honourable Vice-chancellor, GM University, Sambalpur** inaugurated the webinar and presented his remarks. Dr. Devraj Mishra also introduced the resource persons of the resource person. The chief guest and the first resource person Prof. Pati congratulated the institution for its first ever webinar and wished for more such programmes in the future. He also presented a wonderful talk on the topic “**Clock and Health in Human during the COVID-19 Pandemic**”. The topic in itself was intriguing and interesting. Moreover Prof Pati’s lucid style of presentation made the session even more so engaging. The second resource person of the webinar was **Prof. Amiya Kumar Rath, advisor NAAC** who presented on the topic “**Higher Education in This Current Scenario of COVID-19**”. Prof. Rath elaborated on the state of Higher Education in the situation of pandemic. He spoke about the anticipated changes in the working models of HEIs and the long term changes caused by the sudden shift in process, behavior and new resource development. He also proposed innovative methodologies to ensure quality and continuity in education in the face of a world pandemic. The third resource person of the webinar was **Prof. Uma Charan Pati, Deputy Registrar GM University**. Prof. Pati delivered a talk on “**The Psycho-economic Dimensions of the COVID-19 Pandemic**”. He shed light on such an intriguing and sensitive dimension of the pandemic. After the conclusion of the talks by the resource persons a question answer session with the participant was conducted. Thereafter, the vote of thanks for the webinar was extended by Mrs. Arati Panda, Coordinator, IQAC, Jawaharlal College Patnagarh. In the end, Dr. Devraj Mishra declared the closure of the webinar.

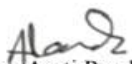
Sample of the e-certificate of Participation


Certificate of Participation



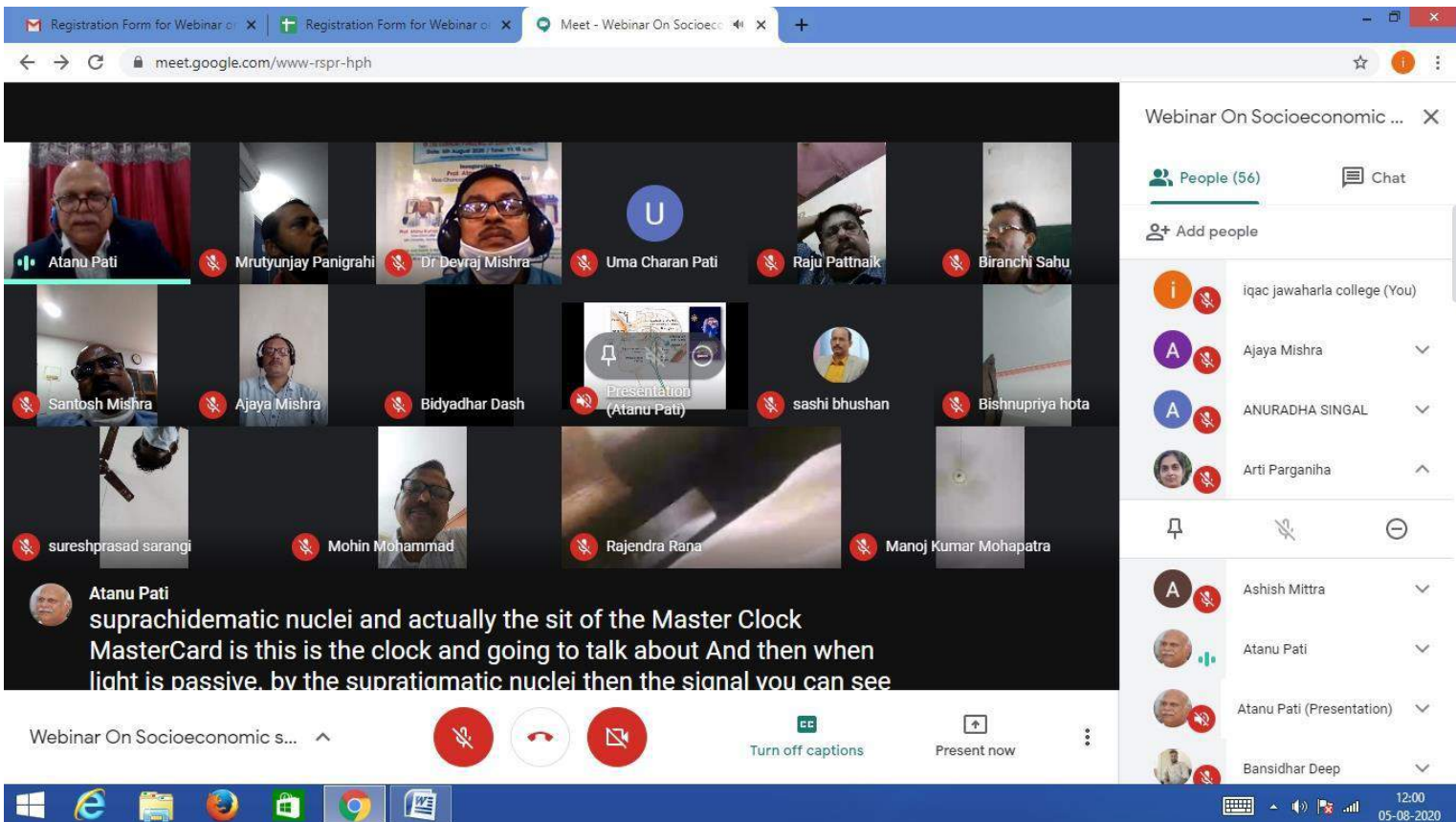
WEBINAR ON
"Socio-economic scenario in the current pandemic of COVID-19 in India"
ORGANIZED BY
Jawaharlal College, Patnagarh
ON 5th August 2020

This is to certify that **Maj. (Dr.)RAM KUMAR SAHU** from
..... **Jawaharlal College, Patnagarh** has participated in the webinar on the topic
"Socio-economic scenario in the current pandemic of COVID-19 in India" organized by the Internal Quality
Assurance Cell (IQAC) of Jawaharlal College, Patnagarh on 5th August 2020.


Smt. Arati Panda
IQAC Co-ordinator
Jawaharlal College, Patnagarh


Dr. Devraj Mishra
Convener / Principal
Jawaharlal College, Patnagarh

Glimpses/ Screenshots of the Webinar :



Registration Form for Webinar | Registration Form for Webinar | Meet - Webinar On Socioeco... | meet.google.com/www-rspr-hph

Webinar On Socioeconomic ...

People (56) | Chat

Add people

iqac jawaharlal college (You)

Ajaya Mishra

ANURADHA SINGAL

Arti Parganiha

Ashish Mitra

Atanu Pati

Atanu Pati (Presentation)

Bansidhar Deep

Atanu Pati
suprachidematic nuclei and actually the sit of the Master Clock
MasterCard is this is the clock and going to talk about And then when
light is passive. by the supratiamatic nuclei then the signal you can see

Turn off captions | Present now

12:00
05-08-2020

Registration Form for Webinar | Meet - Webinar On Socioeconomic | Meet Attendance 2020-8-5 12:20

meet.google.com/www-rspr-hph

Atanu Pati is presenting

Proposed Model of Circadian-adapted immune surveillance

Advanced Drug Delivery Reviews, 9 (1992) 85-112

Webinar On Socioeconomic s... | People (47) | 49 | Chat

Add people

- Iqac jawaharla college (You)
- Ajaya Mishra
- Amiya Rath
- ANURADHA SINGAL
- Arti Parganiha
- Ashish Mitra
- Atanu Pati (Presentation)

Atanu Pati is presenting

12:39 05-08-2020

Registration Form for Webinar | Meet - Webinar On Socioeconomic | Meet Attendance 2020-8-5 12:20

meet.google.com/www-rspr-hph

Atanu Pati is presenting

Webinar On Socioeconomic s... | People (43) | 46 | Chat (7)

Atanu Pati (Presentation)

- Atanu Pati
- Bansidhar Deep
- bhabani sankar Lenka
- Biranchi Sahu
- BRAHMA BARCHASI AR...
- Dilip Kumar Mishra
- Dinesh Rana
- Dr Devraj Mishra


Atanu Pati is presenting

12:54 05-08-2020

Registration Form for Webinar... Meet - Webinar On Socioeconomic... Meet Attendance 2020-8-5 12:20

meet.google.com/www-rspr-hph

Amiya Rath is presenting



Webinar On Socioeconomic sce... ^

Turn on captions

Amiya Rath is presenting

People (38) 37 Chat (13)

Add people

- iqac jawaharla college (You)
- Ajaya Mishra
- Amiya Rath
- Amiya Rath (Presentati...
- ANURADHA SINGAL
- Ashish Mitra
- Atanu Pati
- AYESHA BANU
- Bansidhar Deep

Windows taskbar: 13:05 05-08-2020

Inbox - jciqac@gmail.com - Gmail Meet - Webinar On Socioeconomic... Meet Attendance 2020-8-5 12:20

meet.google.com/www-rspr-hph

Amiya Rath is presenting

anticipated changes

- The changes required immediately to deal with issue of **continuity of teaching and research**.
- The changes required to maintain the **employment of students** already placed or likely to be placed in jobs in the next few months
- The long-term changes caused by the sudden **shift in process, behavior and new resource development**
- The changes in the working model of Higher Education Institutions (HEIs) in terms of the ability of parents and students to afford higher education; and
- The macro-level **changes needed for regulating and**

Webinar On Socioeconomic sce... ^

Turn on captions

Amiya Rath is presenting

People (35) 32 Chat (16)

Add people

- iqac jawaharla college (You)
- Ajaya Mishra
- Amiya Rath
- Amiya Rath (Presentati...
- ANURADHA SINGAL
- Atanu Pati
- Atanu Pati
- AYESHA BANU

Windows taskbar: 13:48 05-08-2020

Registration Form for Webinar... Meet - Webinar On Socioeconomic... Meet Attendance 2020-8-5 12:27

meet.google.com/www-rspr-hph

Amiya Rath is presenting

COVID-19 PANDEMIC AND ITS IMPACT

- crucial global **health calamity** of the century
- spread around the world, posing enormous health, economic, environmental and social challenges to the entire human population.
- **coronavirus outbreak is severely disrupting the global economy**
- All nations are struggling to slow down the transmission of the disease by
 - testing & treating patients,
 - quarantining suspected persons through contact tracing, restricting large gatherings, maintaining

Webinar On Socioeconomic sce... Turn on captions Amiya Rath is presenting

People (36) 36 Chat (13)


Add people

- iqac jawaharla college (You)
- Ajaya Mishra
- Amiya Rath
- Amiya Rath (Presentati...)
- ANURADHA SINGAL
- Ashish Mittra
- Atanu Pati
- AYESHA BANU

13:06 05-08-2020

Link for Feedback Form - Jc... Feedback Form for Webinar on... Meet - Webinar On Socioeconomic... Meet Attendance 2020-8-5 12:27

meet.google.com/www-rspr-hph



Webinar On Socioeconomic s... People (32) 34 Chat (17)

DR. PRIYAMBADA HOTA 1:19 PM
Thank you sir for your information to meet the challenges of online teaching

AYESHA BANU 1:24 PM
Both teachers and students need to come out of the comfort zone. Welcome the new innovative teaching-learning process. Application of learning is most important as Rath Sir is telling.

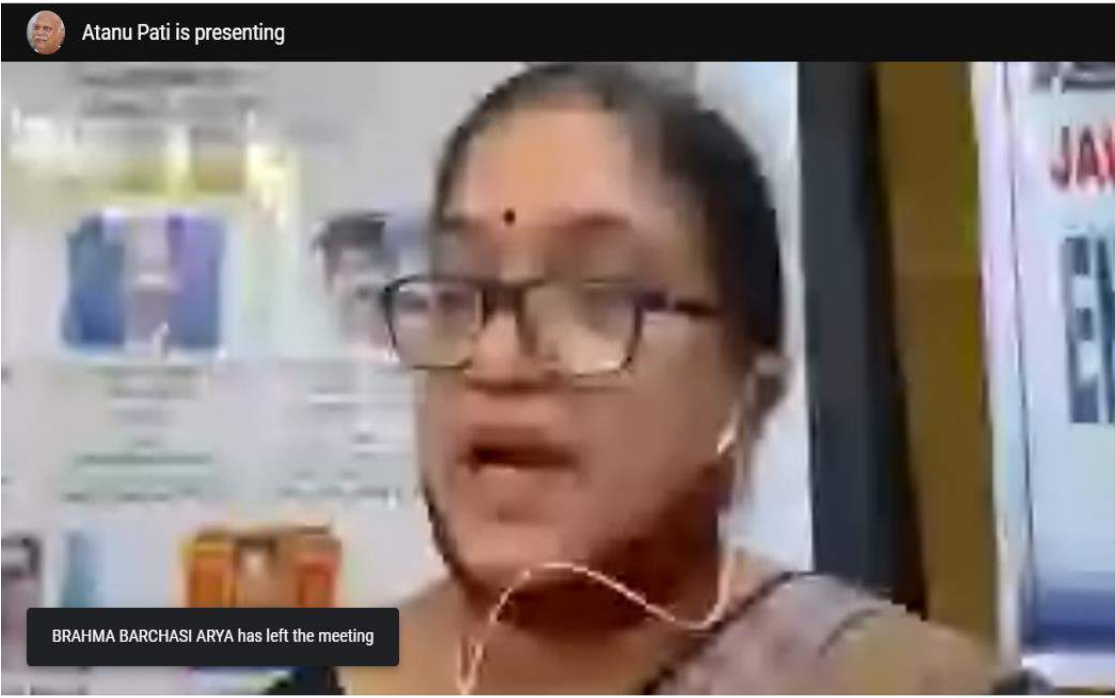
AYESHA BANU 1:33 PM
Let's response, not react to the new challenges of our life. Thanks Sir for your brilliant talk

You 1:37 PM
Please send us your valuable feedback via the link provided below Help us improve!
<https://forms.gle/6QM6A7WT1MjPxrJ6>

Webinar On Socioeconomic sce... Turn on captions Present now

Send a message to everyone

13:57 05-08-2020



Webinar On Socioeconomic s... X

People (42) 46 Chat (10)

+ Add people

- iqac jawaharla college (You)
- Ajaya Mishra
- Amiya Rath
- ANURADHA SINGAL
- Ashish Mitra
- Atanu Pati (Presentation)

Atanu Pati is presenting

Bansidhar Deep

Webinar On Socioeconomic sce... ^

Turn on captions

Atanu Pati is presenting